

# LOOK of all

## **Big-on-room Suburbans for families big on doin' things**

How's this sound for a combination-  
All the comfort of a station wagon, a  
the toughness of a truck and all the  
room of a Chevy Suburban. Nine pas-  
sengers worth of room without crowd-  
ing. And a ride made even more  
comfortable with deep-coil springs at  
all four wheels. Trailer towing's a  
snap, of course. And 4-wheel drive  
that really likes its countryside rugged-  
is yours for the ordering.



# AT THE FUN SIDE

## these other Chevies

### **Tough-as-they-come pickups for the easiest going going.**

Things like double-wall strength that make Chevies work-favorites, make them Number One for fun, too. Add the big choice of models and lengths (including Longhorn, first pickup designed for king-sized campers). The choice of Six or V8 engines. The grille to tailgate choice of special camper equipment. And it makes your choice in a camper pickup pretty easy: It's Chevy!

### **Bred-for-work El Caminos that would just as soon be having fun.**

Don't let El Camino's wind-sleek looks fool you. Underneath it all it's truck tough. Ready to move a half-ton of cargo with truck muscle ease. Ready to move you with fine car excitement. Order a 396 V8. Strato bucket seats. You name it. It's El Camino if you're looking for more than a car in your next car. More than a truck in your next truck.

### **The Walk-In Wagon.**

What does "Walk-In" mean? It means that a Chevy 3-seat wagon is easily boarded from *all* doors—including the back door—tailgate. Swing it open and a handy step appears on the bumper. You step up into the wagon and turn around to sit on the rearward facing seat. You can do all this without bumping your head. Once inside, you can enjoy the room and luxury of the Kingswood wagon. One of Chevrolet's biggest and most popular wagons. Walk in one today.









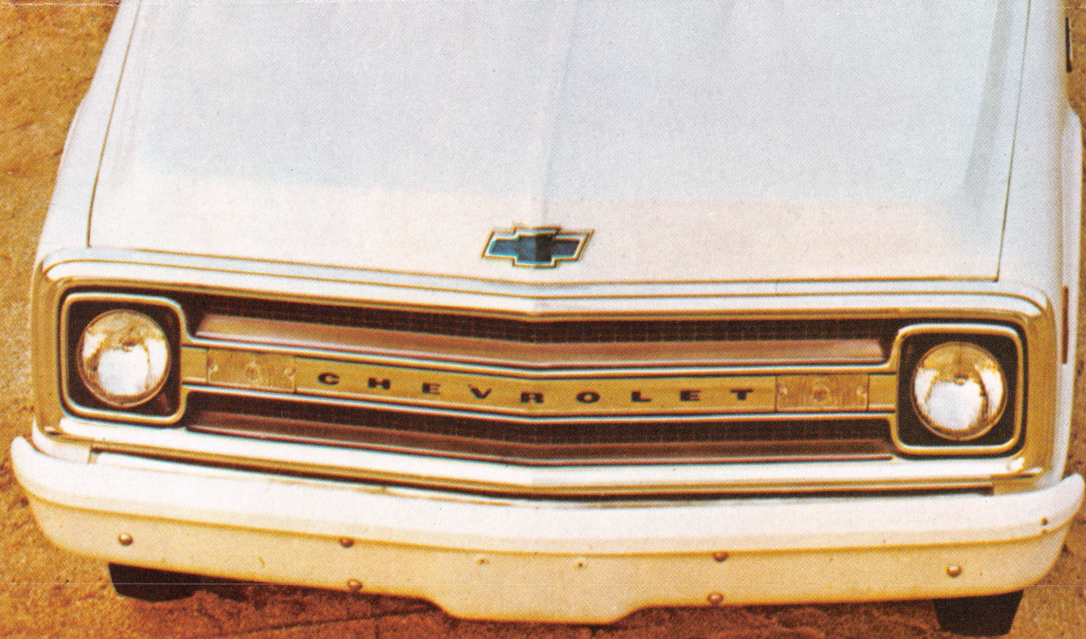


















BULK RATE  
U.S. POSTAGE  
**PAID**  
DETROIT, MICH.  
PERMIT NO. 4719

Be  
sure  
you look  
at both  
sides  
of Chevy's  
new  
Blazer

MR HARRY E CALE  
R1 BX 19  
CHIPPEWA FLS WI 54729





**After you look at its  
hard-working side**







## **Chevy-Van, Sportvan, Presto! Camper van.**

Chevy-Vans and Sportvans are regular magicians when it comes to converting into campers. Because of their size and yawning door openings, they're naturals. They convert quickly and easily. And best of all, they do it inexpensively. In two family-sizes: 90- and 108-in. wheelbase models.

## **Make all your travel arrangements at your Chevrolet Dealer's Sports-Recreation Dept.**

All illustrations and specifications contained in this literature are based on the latest product information available at the time of publication. The right is reserved to make changes at any time in prices, color, materials, equipment, specifications and models, and also to discontinue models. CHEVROLET MOTOR DIVISION OF GENERAL MOTORS CORPORATION, DETROIT, MICHIGAN 48202. T.D.M. No. 69-6—May 1969—LITHO IN U.S.A.



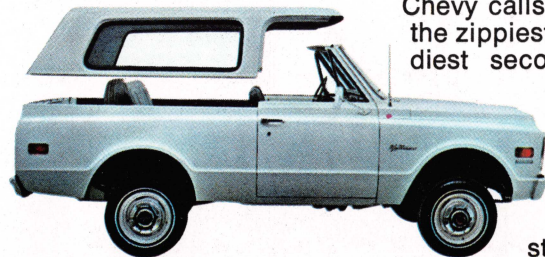




© 1969 Chevrolet Motor Division, General Motors Corporation, Detroit, Michigan



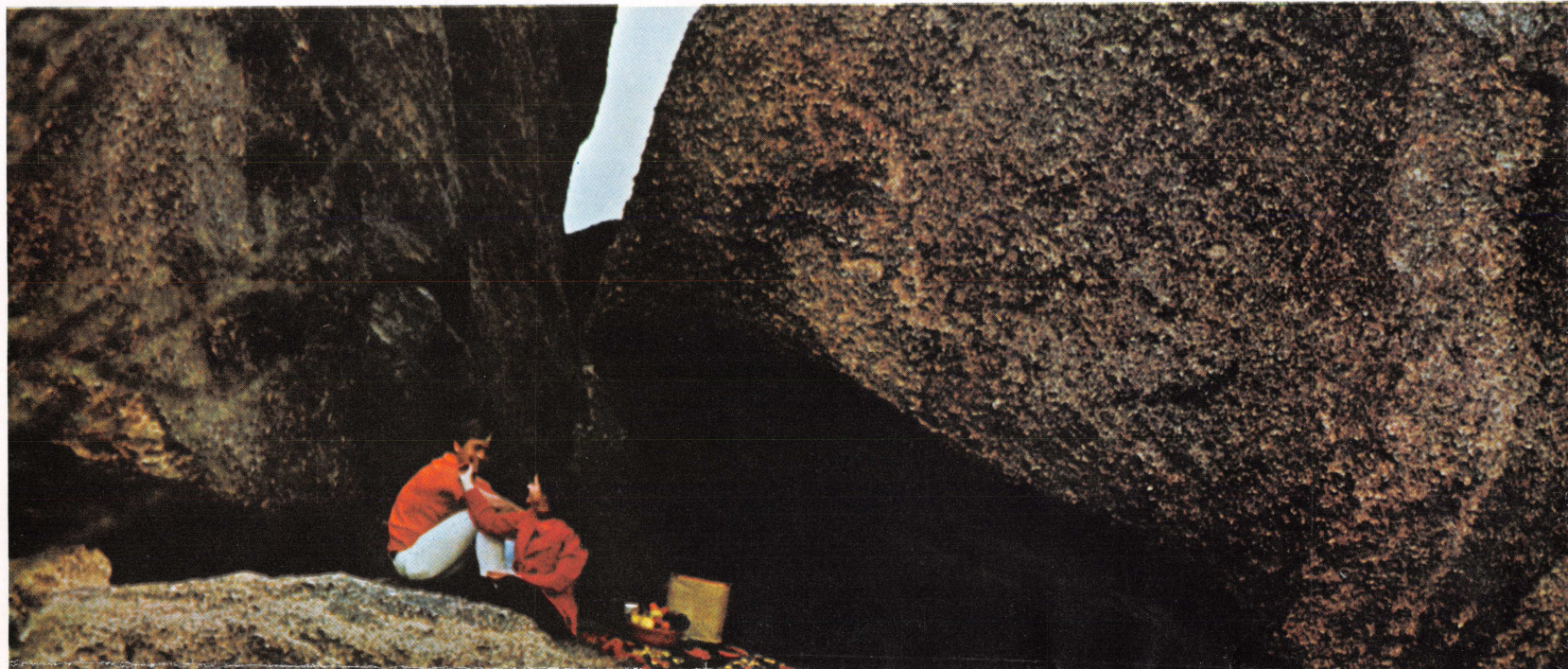
**the most power, room  
and track ever poised on a  
quick, short wheelbase.**



Chevy calls it Blazer. You'll call it the zippiest pickup ever. The handiest second car around. The most fun-packed, go-anywhere vehicle you ever headed up a mountain, tracked through a woods or forded a mountain stream.

What's Blazer got that the other car-truck combinations haven't? Plenty: Like a wider track—for the surest footing this side of a jungle cat. More room—more cargo space for jobs, more elbow-room for people. And more power than anything else like it — up to 350 cu. in. and 255 hp.













the stamina and toughness of a Chevy truck. And you do your option picking from the longest list yet, running all the way from a removable fiberglass reinforced hard top to an engine block heater for starts in arctic weather.

If you're itching to go places, so's Blazer. Available soon at your Chevrolet dealer's.

# CHEVY'S NEW Blazer

